

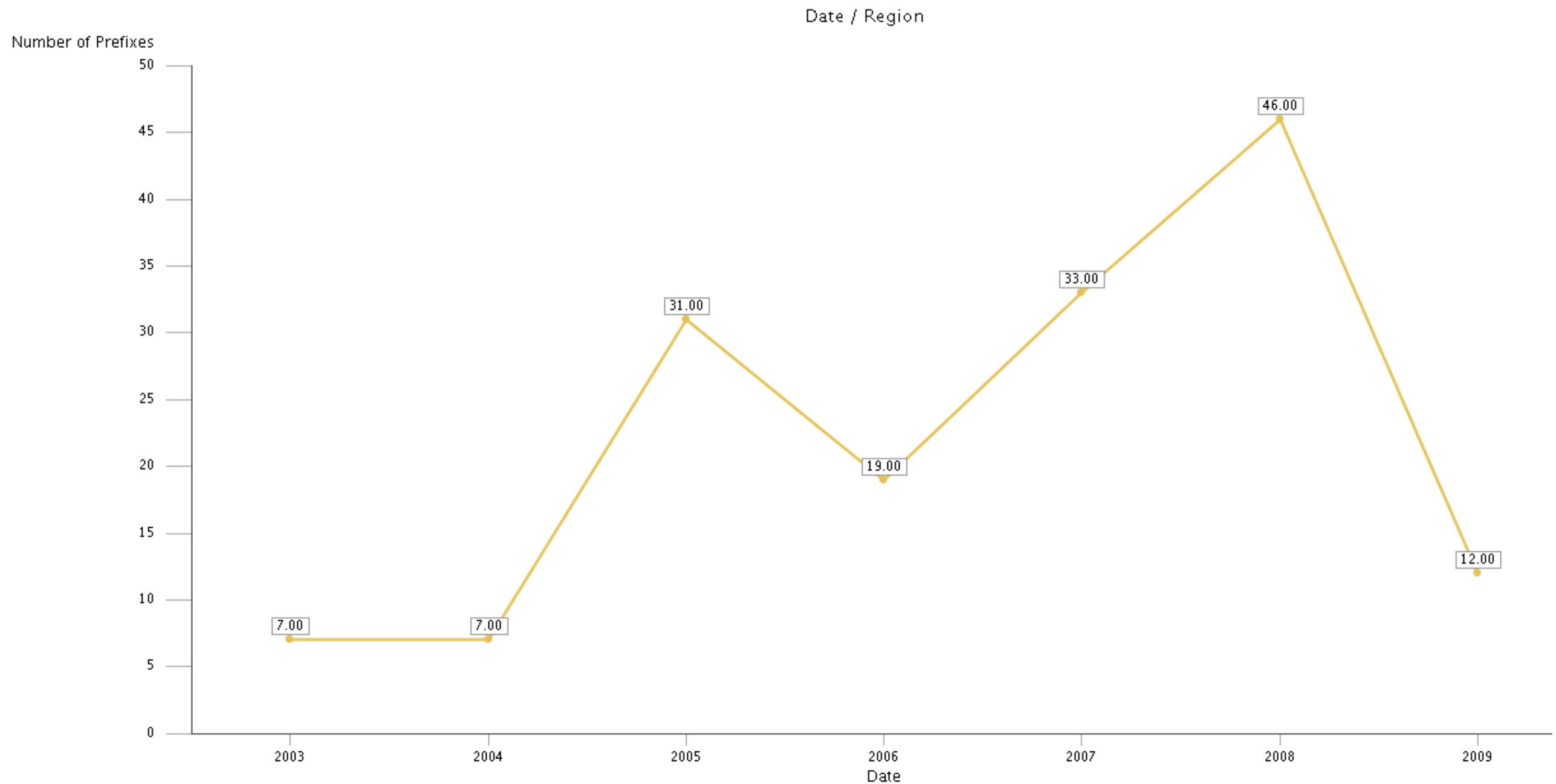
# IPv6 in the LACNIC Region.

Roque Gagliano  
[roque@lacnic.net](mailto:roque@lacnic.net)

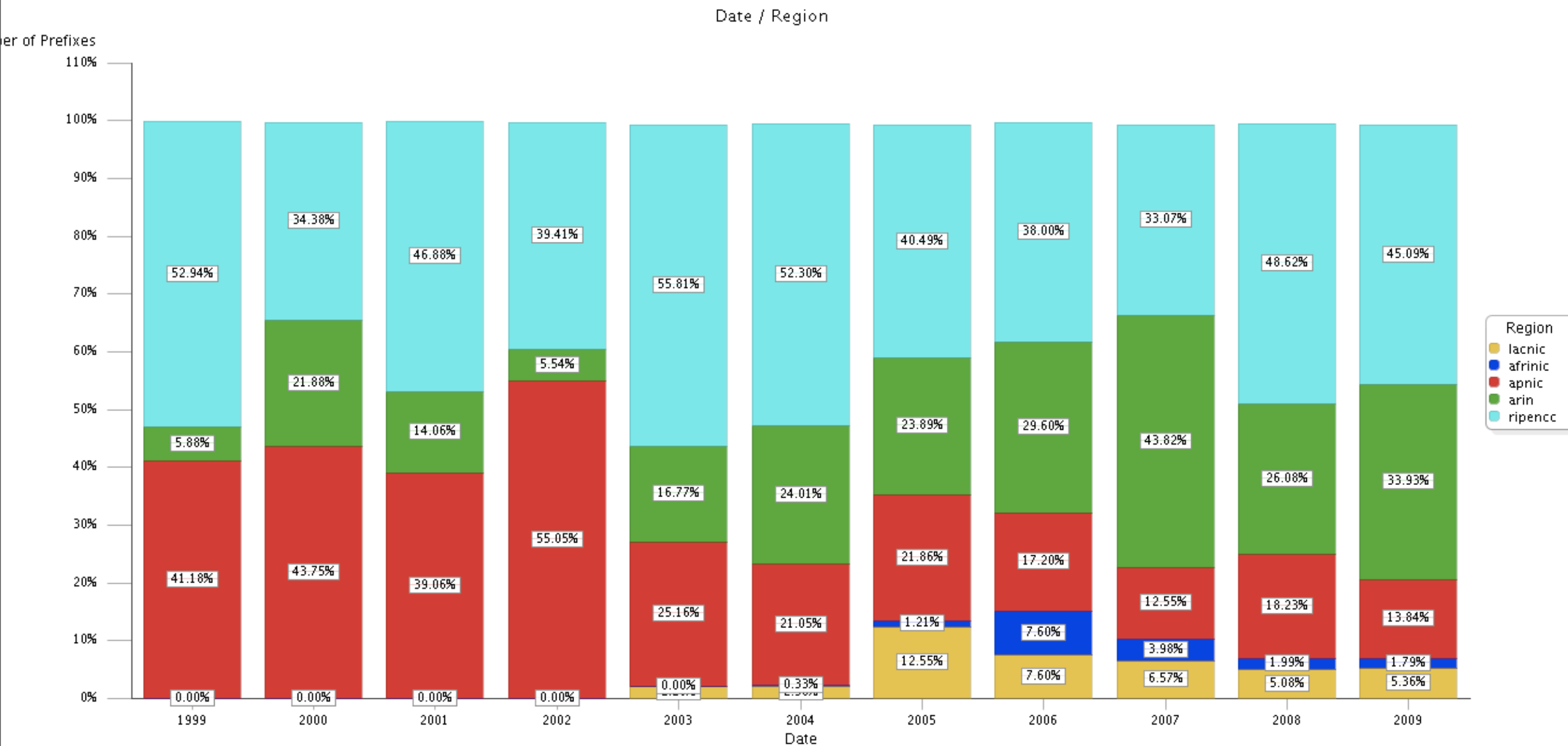
# Agenda

- Some stats.
- What are we doing?
- What could we be doing?

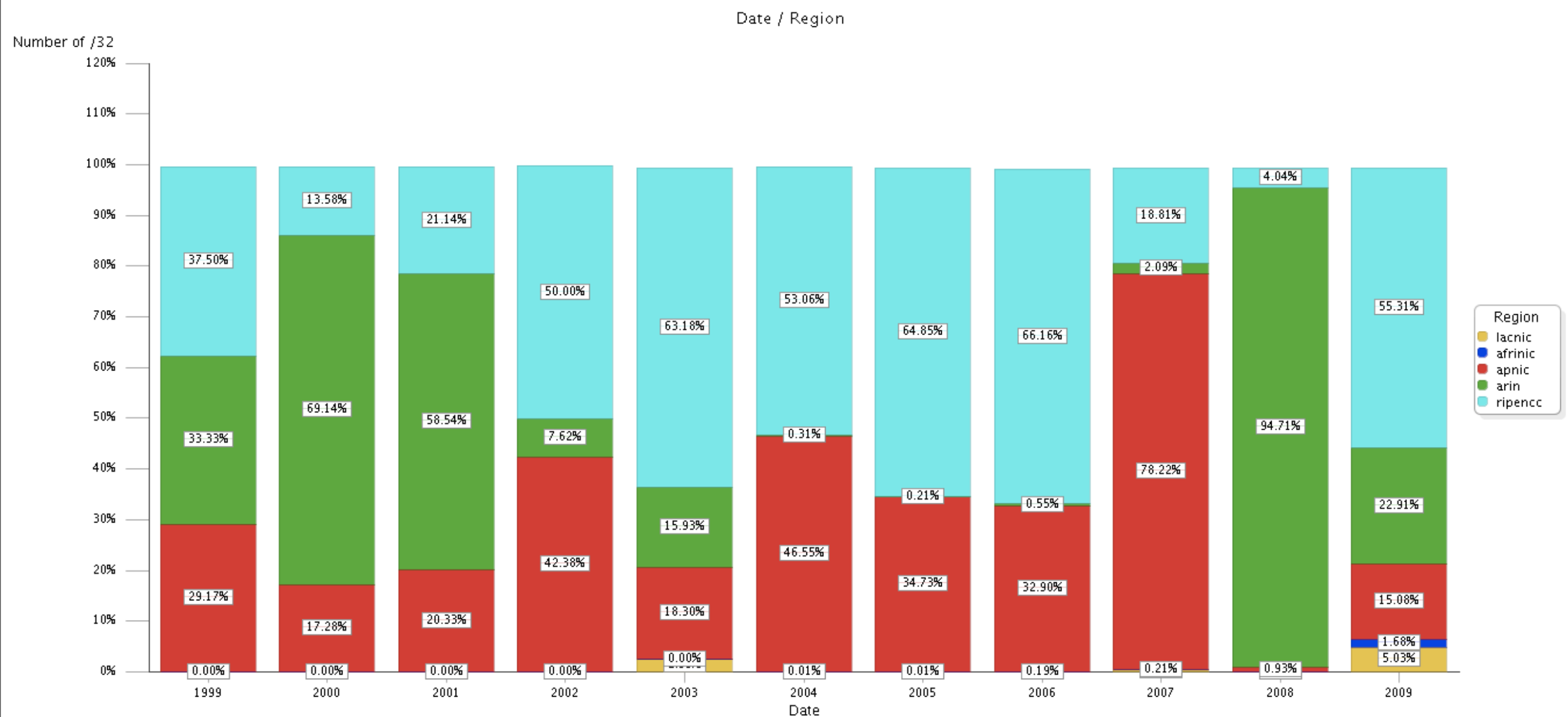
# Allocations/Assignments



# Allocations/Assignments

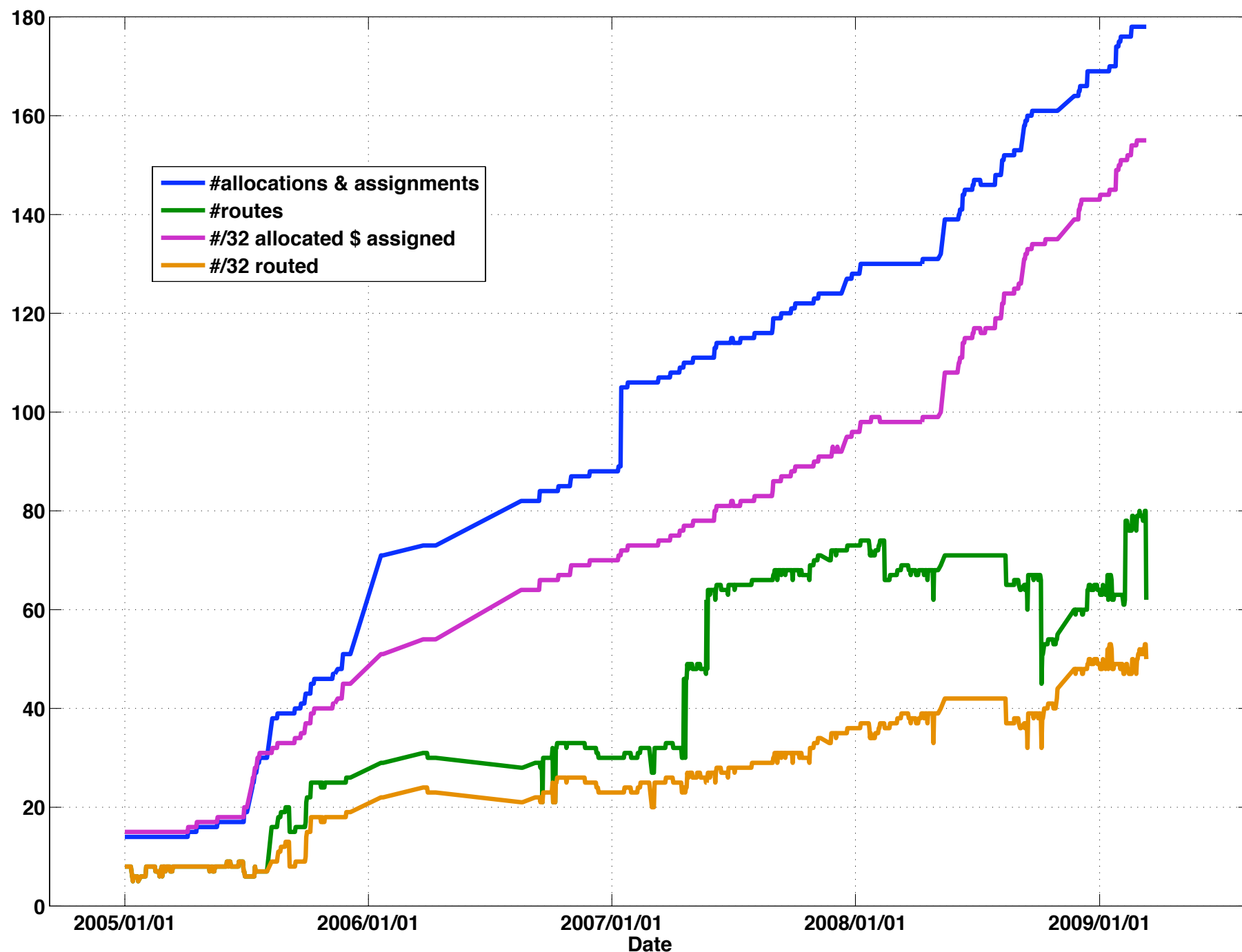


# Allocations/Assignments

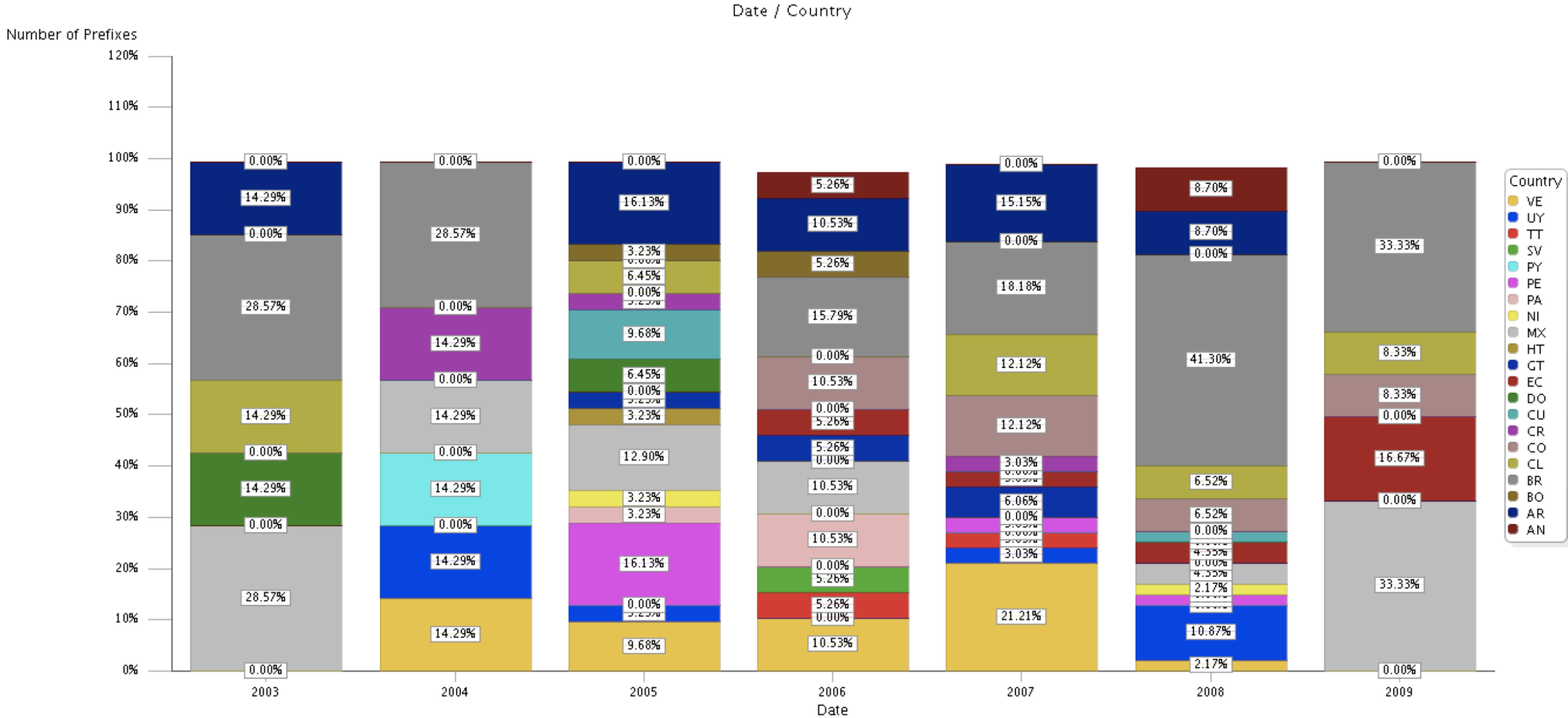


# Allocations

## Assignments in time:

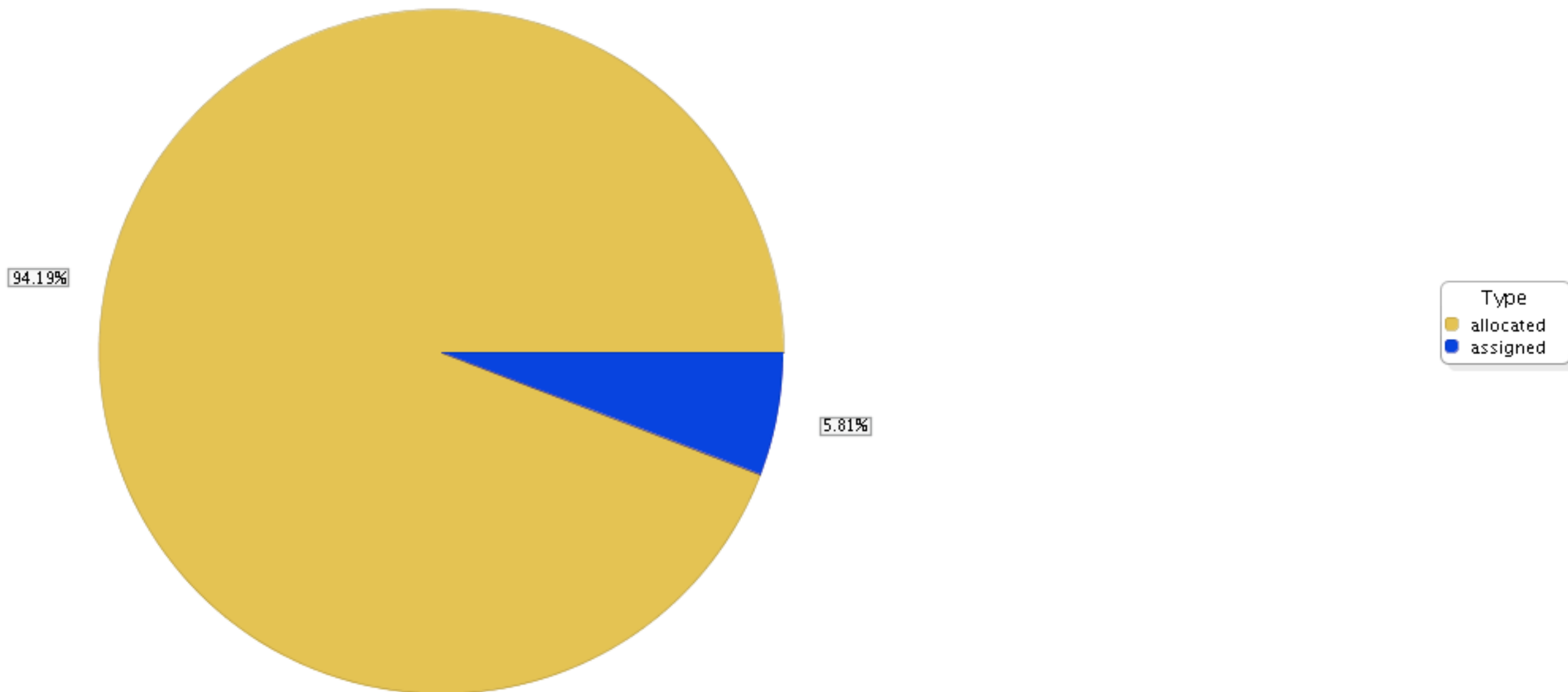


# Allocations/Assignments



# Allocated vs Assigned

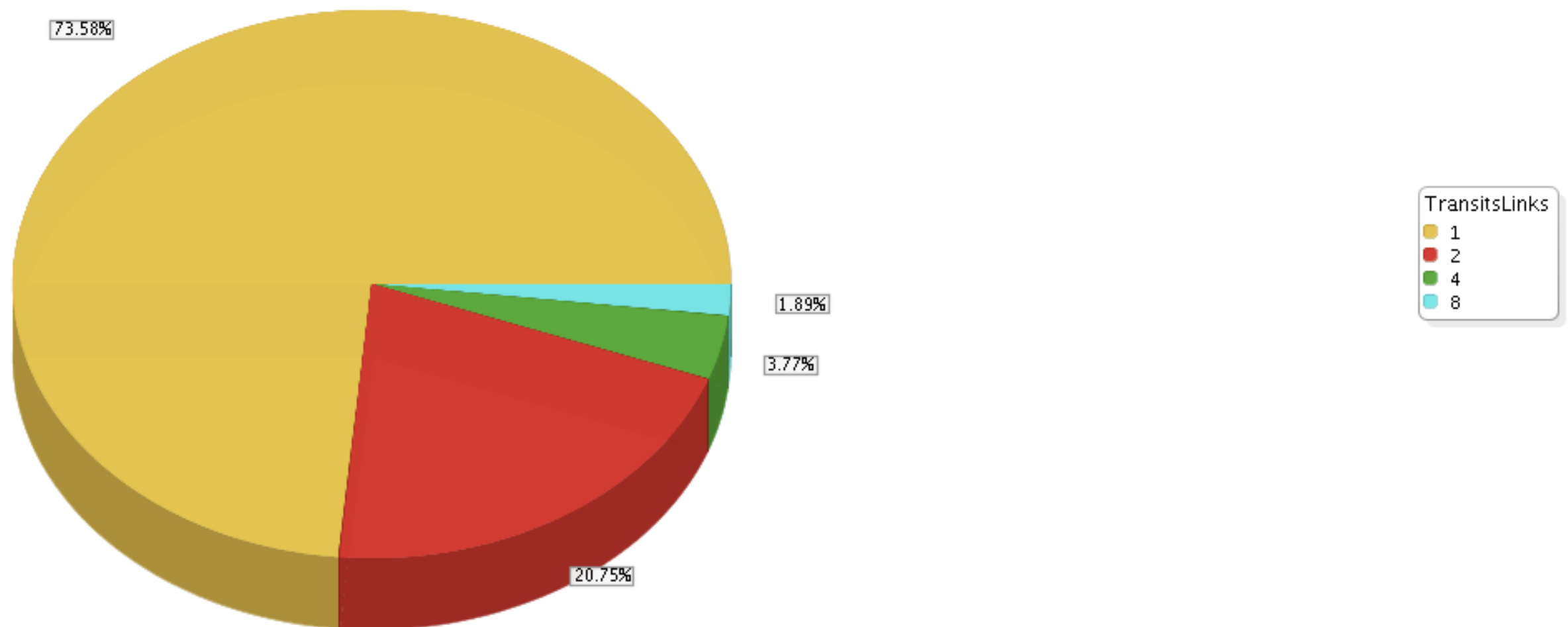
Number of Prefixes by Type



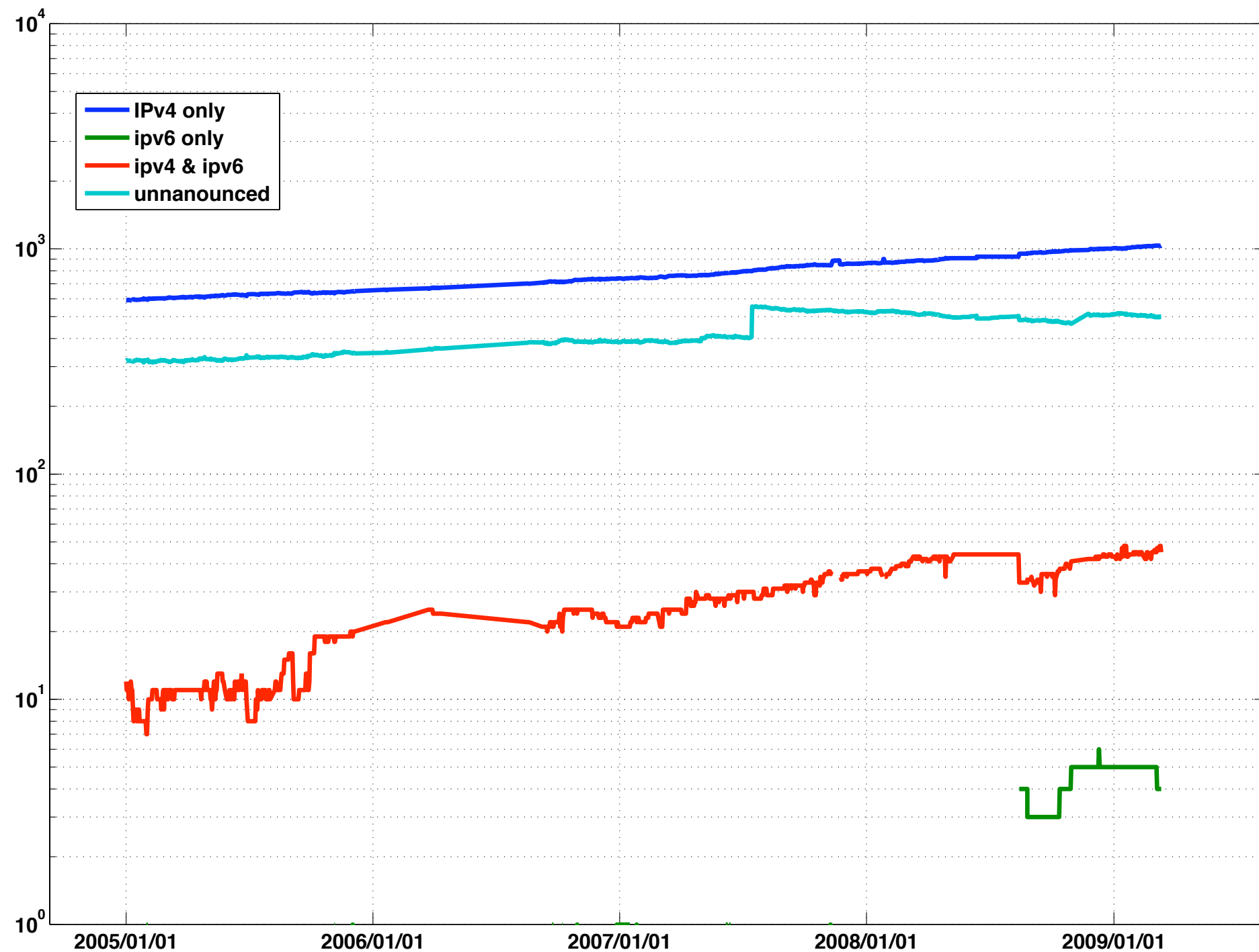


# Multi-homing for Announced Prefixes:

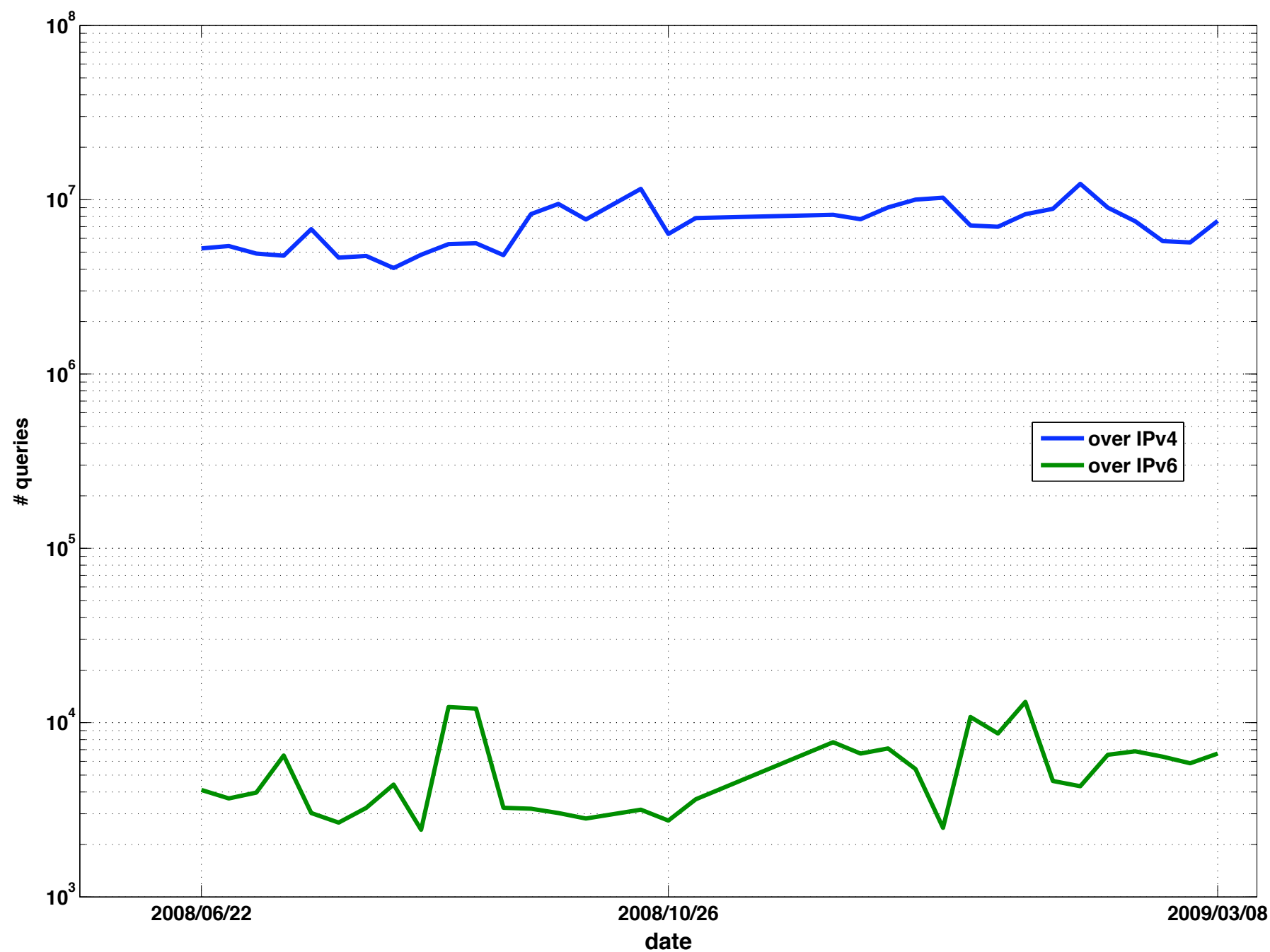
Number of Prefixes by TransitsLinks



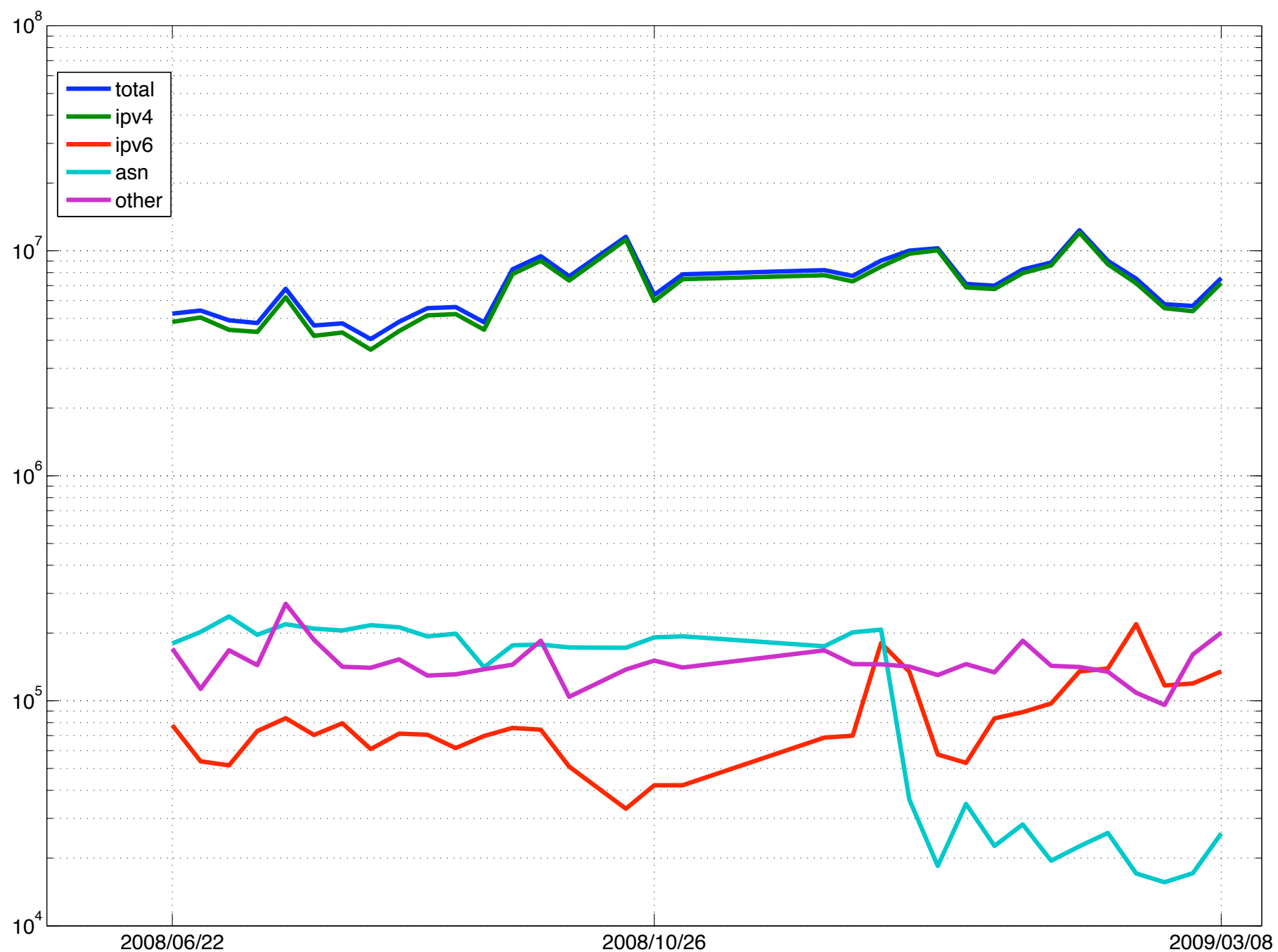
# ASNs originating IPv6:



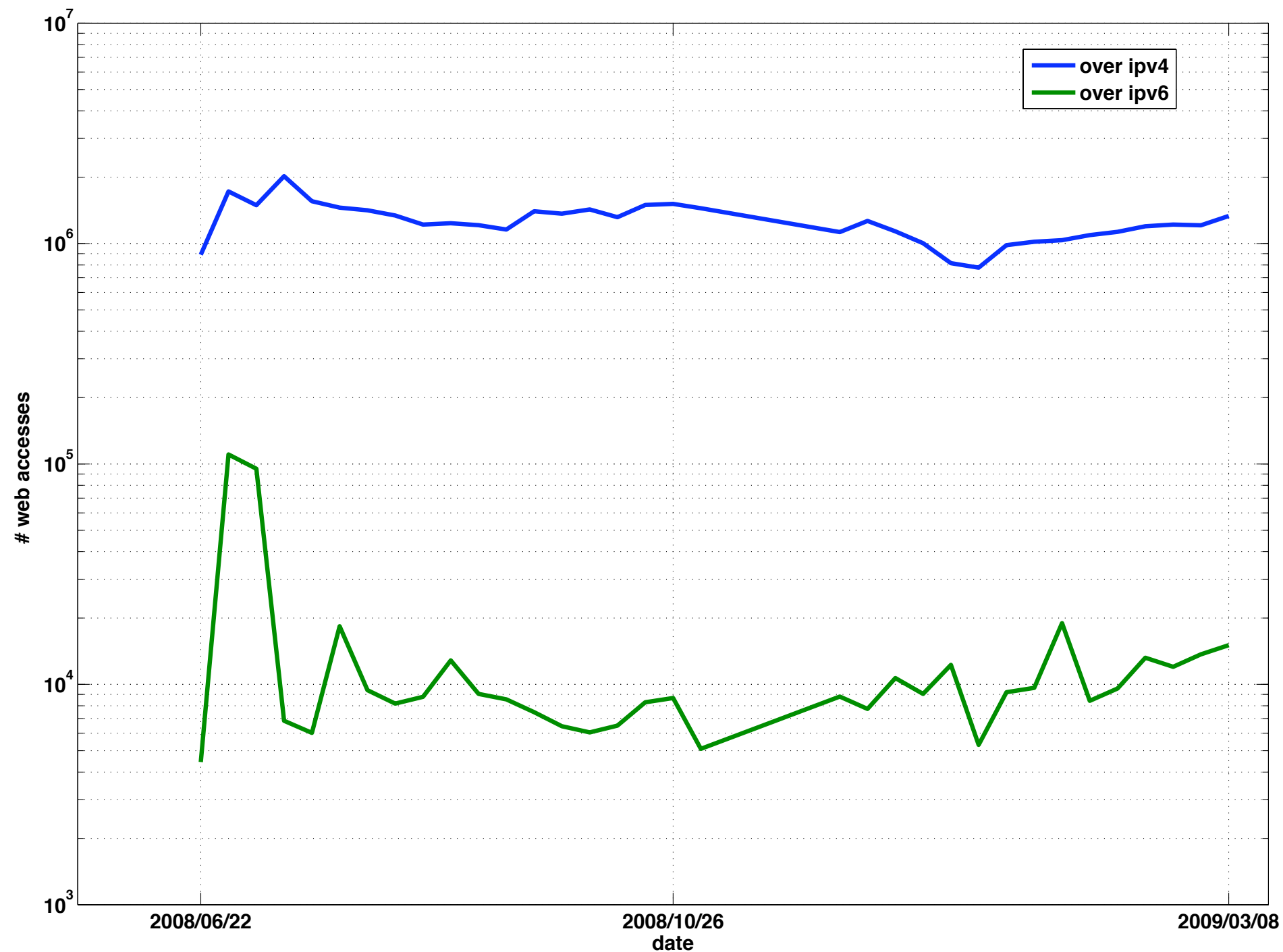
# jwhois access stats (weekly)



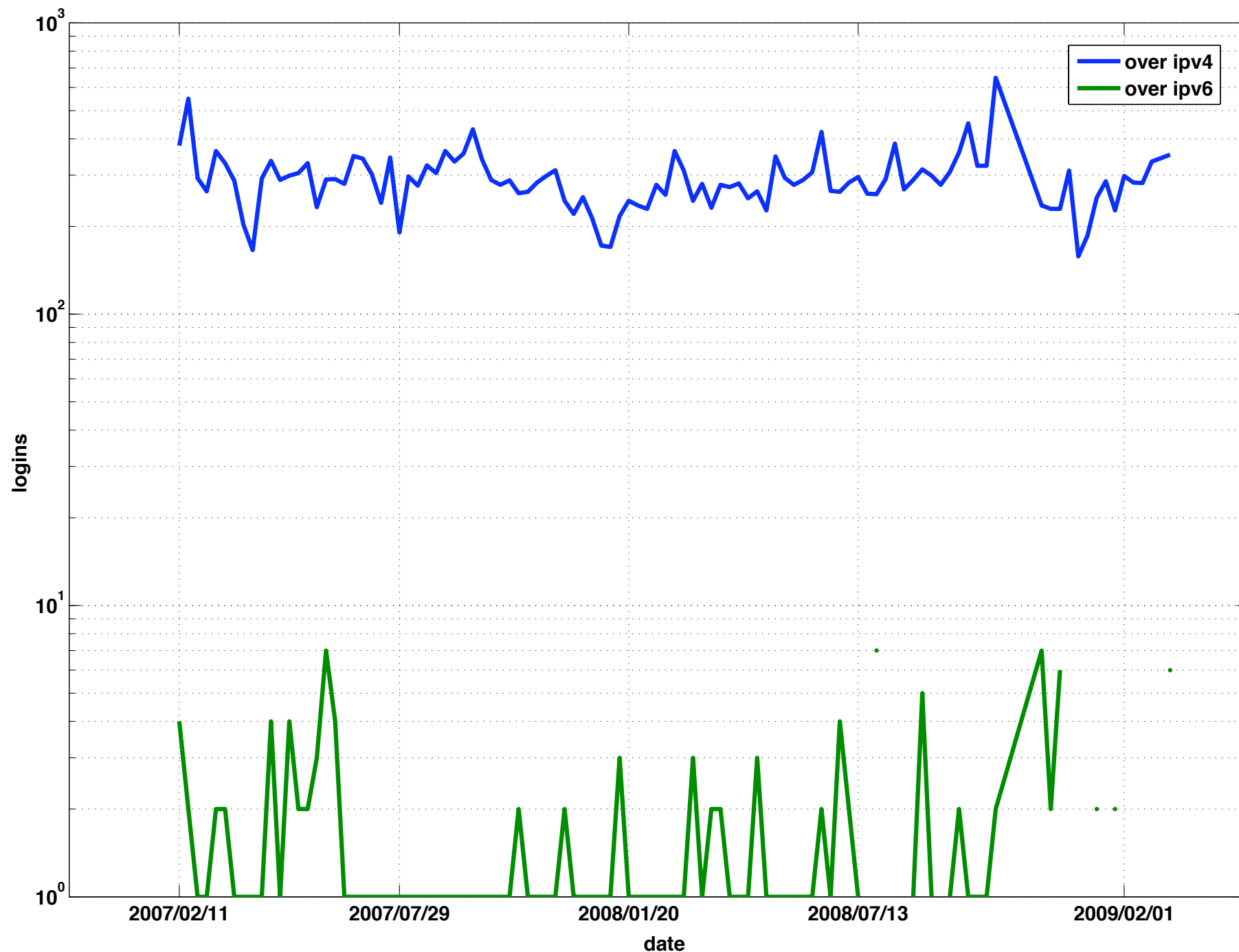
# jwhois queries stats (weekly)



# web-page access (weekly)



# login to LACNIC system (weekly)



# LACNIC's IPv6 activities.

- public services “v6 compatible” since 2005. Most internal services available.
- Training: we have been in 7 countries in 2008 and 1 in 2009 during the IPv6 Tour. More than 1000 people from ISPs, Net Admin, and gov. officials.
- Participating in 6deploy project.
- Portal, webpage, forum, mailing list.
- BCP for IXP and ccTLDs.
- Regional stats.

# transit and ipv6 deployment

- local availability of IPv6 transit has a deep impact in the deployment of IPv6.
- In the LACNIC region, free tunnel providers (freenet6, tunnelbroker.net) are not an option because of long delays.



# what are trainees asking?

- transition and life after depletion.
- provisioning.
- what will happens with reverse dns?  
Particularly for broadband delegations.
- what will be the shortest routable prefix length?
- what about open-source tools? particularly IPplan.

# LACNIC issues implementing ipv6.

- PMTUD problems. MTU=1280bytes in servers should be recommended?
- OpenBSD/pf does not deal with IPv6 fragments (problem for UDP: DNSSEC).
- We had problems with uRPF and 6to4.
- Lack of support in open-source: openvpn, jabberd, quagga...some of them very tricky.
- Management: should you monitor all your services in v4 & v6 or assume the service is always dual stack and only check v6 reachability?

**thanks.**